



STEINWAY & SONS



A woman in a vibrant red, strapless, form-fitting dress is seated on a black piano bench. She is positioned to the left of a black Steinway grand piano, which is open. Her hair is styled in a bun, and she is looking upwards with her arms raised in a dramatic gesture. The piano is a classic grand piano with the Steinway & Sons logo and name visible on the fallboard. The background is a warm, textured wall, and the floor is a light-colored wood. The lighting is soft and focused on the woman and the piano.

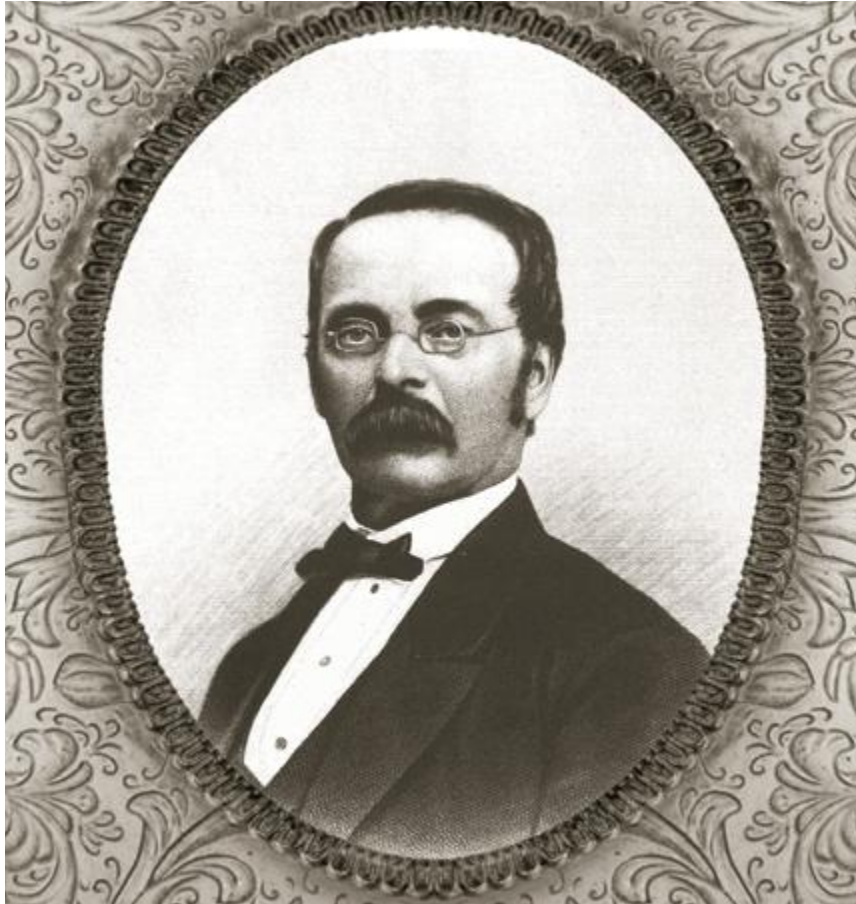
97% OF SOLO PIANISTS  
CHOOSE STEINWAY.

STEINWAY & SONS

A black Steinway grand piano is the central focus, positioned in a large, well-lit workshop. The piano is open, showing its internal mechanism. In the background, several workers are seen at their workstations, engaged in various tasks related to piano construction. The workshop is filled with wooden components, including curved frames and uprights, arranged on shelves and workbenches. The lighting is warm and natural, highlighting the craftsmanship and the scale of the operation.

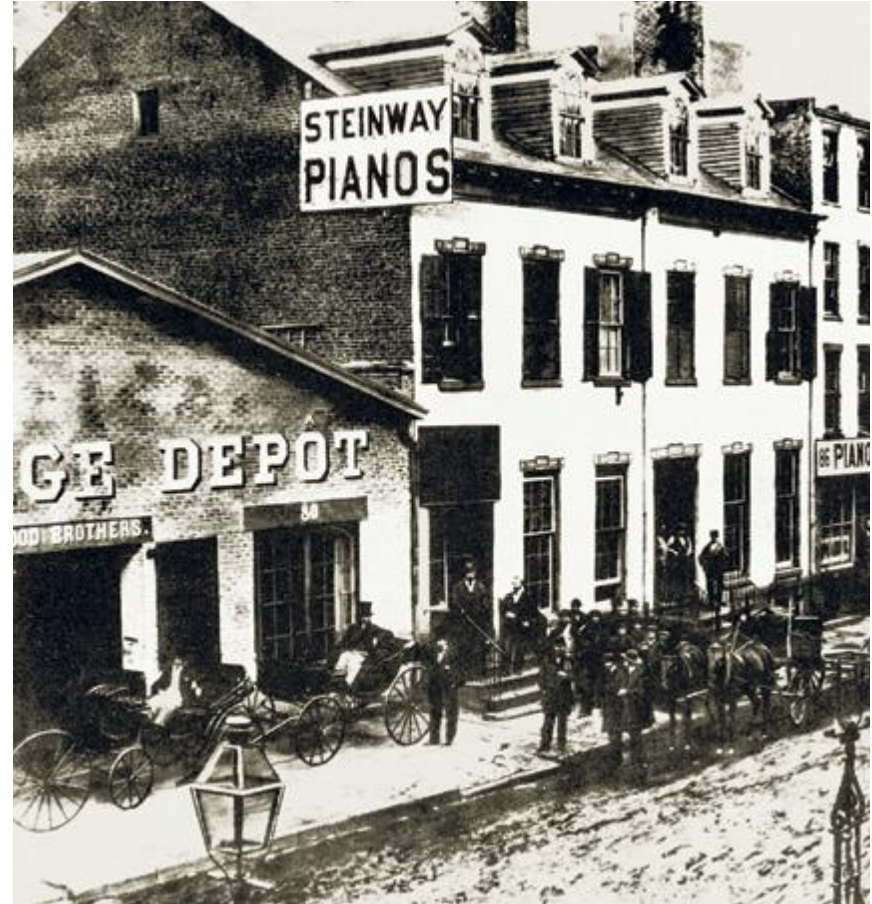
# STEINWAY PIANOS ARE MADE BY PERFECTIONISTS... ONE PIANO AT A TIME.

Since 1853, Steinway & Sons has made the finest pianos in the world. The meticulous crafting and superior materials used in today's Steinways give them a responsiveness and quality of tone that cannot be felt or heard in any other piano. Created by artisans committed to absolute perfection, the Steinway sets the world standard for sound, touch, beauty, and investment value.



---

A LEGACY OF  
INNOVATION WHICH  
CONTINUES TODAY.



---

Success requires commitment and passion—two qualities demonstrated in abundance by company founder Henry E. Steinway. Born as Heinrich Engelhard Steinweg in Wolfshagen, Germany, he completed his first piano in the kitchen of his house in 1836. The passion and craftsmanship evident in the creation of this first Steinway piano would become the time-honored hallmark of the company. In 1850, Steinweg—later Steinway—immigrated to America with his sons, and on March 5, 1853, Steinway & Sons was founded.



The company quickly made a name for itself in America, essentially laying the foundation for modern piano building. The first Steinway & Sons patent was granted in 1857, and since that time the company has been granted more than 135 additional patents, positioning the Steinway as the piano by which all others are judged. In order to satisfy worldwide demand, C. F. Theodore Steinway

expanded his father's legacy beyond New York and opened the Hamburg production facility in 1880. The Hamburg factory remains the company's only manufacturing facility outside of New York, and both Steinway factories employ the innovative designs, attention to detail, and superior quality materials which have established the Steinway piano as the world's finest.

# SUPERIOR MATERIALS CREATE SUPERIOR SOUND.



## THE RIM

---

The one-piece continuous bent rim is one of the most important technical innovations in piano building. It is the rim that provides the foundation for the beauty, stability, and quality of each Steinway grand piano. The rim is comprised of up to 20 layers of hard rock maple—with both inner and outer rim being pressed together in a single operation. The unique one-piece continuous bent rim construction has been an integral part of every Steinway grand piano since it was developed and patented by Steinway & Sons in 1878.



## THE SOUNDBOARD

---

The soundboard lies at the heart of a Steinway grand or upright piano, which is why great care is needed both in its design and in the selection of the wood. To meet the highest quality standards, only superior Sitka spruce with a regular grain and prescribed minimum number of annual growth rings is acceptable. The production of the Steinway Diaphragmatic Soundboard is based on an innovative patent to achieve optimum performance in dynamic range and maximum sustain. Under this patent, the soundboard is gradually tapered from the center to the edge, permitting freedom of movement and creating a sound of unparalleled richness, sonority, and sustain.



### THE BRIDGES AND PINBLOCK

---

The better the materials, the better the sound. Steinway & Sons constructs its soundboard bridges exclusively from vertically laminated hardwood with a horizontal grain, capped with solid maple. Each bridge is notched by hand for precise, individual string-bearing. This design ensures optimal sound transmission from the strings to the soundboard, resulting in a sustained, resonant tone. The Steinway Hexagrip Pinblock, based on an innovative patent, is engineered to enable pianos to hold their tuning longer and with incredible precision.



### THE CAST-IRON PLATE

---

Up to 20 tons of string tension is being exerted within a piano at all times. It is the function of the cast-iron plate to accommodate this extraordinary force and provide strength and stability throughout the life of the piano. Steinway & Sons uses its own “bell-quality” casting to support this string tension and reduce vibration, which in turn enhances the sound. This component is so integral to the construction of a Steinway piano that Steinway & Sons owns and operates its own foundry, which produces cast-iron plates to its exacting specifications.





# THE NEWEST STEINWAYS ARE THE BEST STEINWAYS.

While Steinways may look the same on the outside, every year brings new innovations. Over the past decade, we've added 12 patents to our 139-patent-strong portfolio. Our culture of continuous improvement and innovation has resulted in greater precision, greater uniformity of touch, and greater sound quality—ensuring that today's Steinway is the finest Steinway yet.

“I’VE BEEN PLAYING STEINWAY PIANOS EXCLUSIVELY FOR MANY  
YEARS ...THEY KEEP GETTING BETTER EVERY YEAR.”

LANG LANG  
STEINWAY ARTIST

PHOTO: ROBERT ASCROFT, COURTESY SONY CLASSICAL

# STEINWAY & SONS PIANOS INCREASE IN VALUE OVER TIME.



PRICE OF A NEW  
STEINWAY MODEL B PIANO

# INTRODUCING SPIRIO



## THE GREATEST ARTISTS IN YOUR HOME

The Steinway Spirio is the first high resolution player piano worthy of the Steinway & Sons name. A masterpiece of precision engineering, technology, and artistry, Spirio provides an unrivaled musical experience, indistinguishable from a live performance.

With the touch of an iPad®, Spirio brings your Steinway to life. Hundreds of performances from the world's greatest Steinway Artists

invite you to enjoy life's greatest musical moments. The Spirio music library, with performances captured at the Steinway Studios, is regularly and automatically updated. The library features everything from Bach to Irving Berlin to Billy Joel, and delivers music to your living room that is indistinguishable from a live performance.



## SUPERIOR TECHNOLOGY

---

The Steinway Spirio's high resolution playback system captures the nuance and passion the pianist intends by using proprietary software to measure hammer velocity (up to 1020 dynamic levels at a rate of up to 800 samples per second) and proportional pedaling (up to 256 pedal positions at a rate of up to 100 samples per second).

The soft trills, delicate pedaling, and thundering fortissimos that distinguish the world's finest artists are reproduced with unparalleled accuracy on a Spirio.

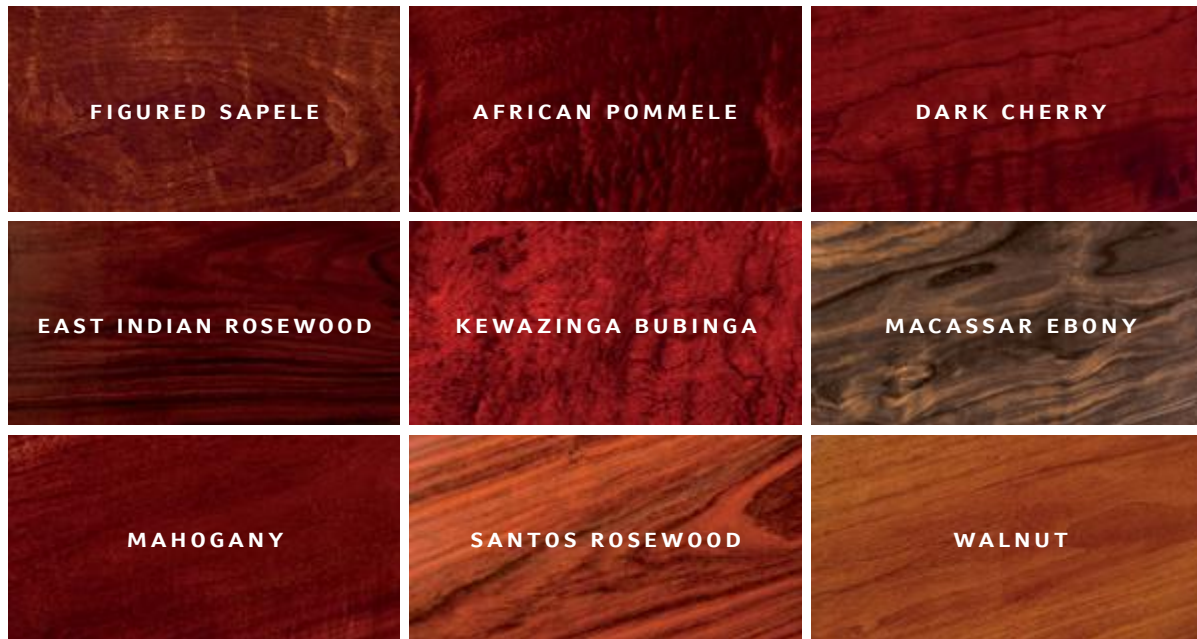
# LIMITED EDITIONS

Steinway & Sons has collaborated with some of the most notable artists and designers of our time to create a special series of pianos that reimagine what uncompromised expression looks like. Custom built at our Steinway New York and Hamburg factories, our Limited Edition collections combine classic Steinway craftsmanship with inspired and meaningful designs—making each Limited Edition Steinway both a majestic musical instrument and a completely unique work of art.



# CROWN JEWELS

Each Steinway Crown Jewel is an original work of art. Crown Jewel pianos are encased in your choice of magnificent woods, prized for their exquisite color and grain, and gathered from around the world—from East Indian Rosewood to African Pommele. Steinway & Sons artisans meticulously match the grain from one end of the piano to the other—even across the beveled edge of the lid.





## CERTIFIED PRE-OWNED

100% STEINWAY. 100% GUARANTEED.

If it's not a Certified Pre-Owned Steinway, it's not a Steinway. For years, non-Steinway dealers and unauthorized piano rebuilders have used inferior non-Steinway parts, seriously compromising an instrument's performance and investment value. Ensure that the pre-owned instrument you are considering has the genuine craftsmanship, touch, and tone of a true Steinway with the endorsement of a Steinway technician, available only through your nearest Steinway & Sons retail location.

**ONLY A CERTIFIED PRE-OWNED STEINWAY PROVIDES A 100%  
GUARANTEE THAT ALL 12,116 PARTS ARE GENUINE STEINWAY.**



# HEIRLOOM COLLECTION

- 100% Authentic Steinway Parts
- Steinway Factory Craftsmanship
- Steinway 5-Year Warranty
- Steinway & Sons Factory Restoration Center Certificate of Authenticity

STEINWAY HEIRLOOM PIANOS HAVE BEEN METICULOUSLY  
REBUILT AT THE STEINWAY & SONS FACTORY.





“I HAVE LONG ADMIRERD STEINWAY PIANOS FOR THEIR QUALITY OF TONE, CLARITY, PITCH CONSISTENCY, TOUCH RESPONSIVENESS, AND SUPERIOR CRAFTSMANSHIP.”

BILLY JOEL  
STEINWAY ARTIST

# OUR PIANOS





## MODEL D CONCERT GRAND

---

The pinnacle of concert grands and the overwhelming choice of concert artists and institutions throughout the world.

**LENGTH 8'11 3/4" (274 cm)**

**WIDTH 61 1/4" (156 cm)**

**WEIGHT 990 lbs (450 kg)**



## MODEL B CLASSIC GRAND

---

A piano designed for spacious homes, smaller recital halls, auditoriums, and broadcasting, recording, or professional studios. Also available as a Steinway Spirio.

**LENGTH 6'10 1/2" (211 cm)**

**WIDTH 58" (148 cm)**

**WEIGHT 760 lbs (345 kg)**



## MODEL A SALON GRAND

---

Reintroduced in 2005 due to popular demand, this legendary piano was first designed by C.F. Theodore Steinway in 1878. It is known for delivering a grand sound in a medium-sized piano.

**LENGTH 6'2" (188 cm)**  
**WIDTH 57 3/4" (147 cm)**  
**WEIGHT 695 lbs (315 kg)**



## MODEL O LIVING ROOM GRAND

---

The largest of the “small grands,” the Model O offers remarkable depth and resonance, yet requires less space than full-sized grands.

**LENGTH 5'10 3/4" (180 cm)**  
**WIDTH 57 3/4" (147 cm)**  
**WEIGHT 616 lbs (280 kg)**



## MODEL M STUDIO GRAND

---

A grand piano with full tone, yet small enough to fit in any home or apartment. Also available as a Steinway Spirio.

**LENGTH 5'7" (170 cm)**  
**WIDTH 57 3/4" (147 cm)**  
**WEIGHT 606 lbs (275 kg)**



## MODEL S CITY GRAND

---

A small grand suitable for the home or apartment where space is at a premium.

**LENGTH 5'1" (155 cm)**

**WIDTH 57 1/2" (146 cm)**

**WEIGHT 540 lbs (245 kg)**





**MODEL 1098**

## STEINWAY & SONS UPRIGHTS

---

Steinway & Sons upright pianos are made to the highest standard of quality in the same factory as our grands, using the same materials, techniques, conditioning processes and artisans. Our upright pianos take advantage of patented features and processes, including our Diaphragmatic Soundboard, Accelerated Action and Hexagrip Pinblock.

---

### MODEL K-52 PROFESSIONAL UPRIGHT

Introduced in 1903, this piano features a soundboard larger in area than many grand pianos for a larger and more resonant voice.

---

### MODEL 1098 STUDIO UPRIGHT

Inspired by the designs of famous 18th century craftsmen, the classic simplicity of this piano will enhance a room decorated in any furniture style.

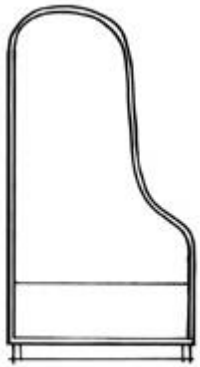
---

### SHERATON PROFESSIONAL UPRIGHT

A piano with enchanting tone and responsiveness in a surprisingly small package. Perfect for smaller environments.

**PLEASE SEE FOLLOWING PAGE FOR UPRIGHT PIANO SPECIFICATIONS.**

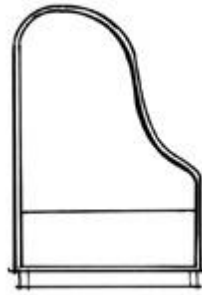
# STEINWAY GRANDS



MODEL D  
CONCERT GRAND

---

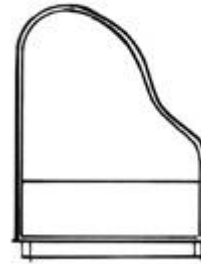
LENGTH 8'11 3/4" (274 cm)  
WIDTH 61 1/4" (156 cm)  
WEIGHT 990 lbs (450 kg)



MODEL B  
CLASSIC GRAND

---

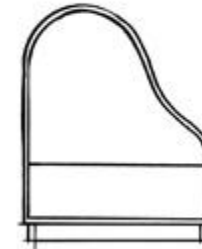
LENGTH 6'10 1/2" (211 cm)  
WIDTH 58" (148 cm)  
WEIGHT 760 lbs (345 kg)



MODEL A  
SALON GRAND

---

LENGTH 6'2" (188 cm)  
WIDTH 57 3/4" (147 cm)  
WEIGHT 695 lbs (315 kg)

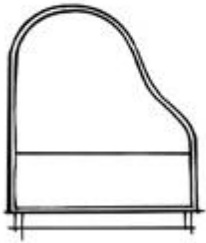


MODEL O  
LIVING ROOM GRAND

---

LENGTH 5'10 3/4" (180 cm)  
WIDTH 57 3/4" (147 cm)  
WEIGHT 616 lbs (280 kg)

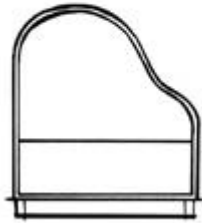
# STEINWAY UPRIGHTS



MODEL M  
STUDIO GRAND

---

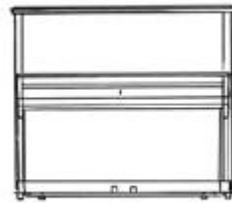
LENGTH 5'7" (170 cm)  
WIDTH 57 3/4" (147 cm)  
WEIGHT 606 lbs (275 kg)



MODEL S  
CITY GRAND

---

LENGTH 5'1" (155 cm)  
WIDTH 57 1/2" (146 cm)  
WEIGHT 540 lbs (245 kg)



MODEL K-52  
PROFESSIONAL UPRIGHT

---

HEIGHT 52" (132 cm)  
WIDTH 60 3/4" (154 cm)  
DEPTH 26 3/8" (67 cm)  
WEIGHT 600 lbs (273 kg)



MODEL 1098  
STUDIO UPRIGHT

---

HEIGHT 46 1/2" (118 cm)  
WIDTH 58 3/8" (148 cm)  
DEPTH 25" (64 cm)  
WEIGHT 480 lbs (218 kg)



SHERATON  
STUDIO UPRIGHT

---

HEIGHT 45 3/4" (116 cm)  
WIDTH 58 3/8" (148 cm)  
DEPTH 25" (64 cm)  
WEIGHT 480 lbs (218 kg)

A close-up, high-angle photograph of a Steinway piano keyboard. The keys are black and white, with a red line marking the middle C. The Steinway & Sons logo, a lyre, is embossed on the fallboard above the keys. The text "STEINWAY & SONS" is printed in white, serif, all-caps font across the keyboard.

STEINWAY & SONS

“A STEINWAY IS A STEINWAY AND THERE IS  
NOTHING LIKE IT IN THE WORLD.”

ARTHUR RUBINSTEIN  
STEINWAY IMMORTAL

FOR MORE INFORMATION,  
VISIT [WWW.STEINWAY.COM](http://WWW.STEINWAY.COM) OR CALL 1.800.STEINWAY



STEINWAY & SONS

Steinway, Steinway & Sons and the Lyre design are registered trademarks, and Spirio is a trademark, of Steinway, Inc.